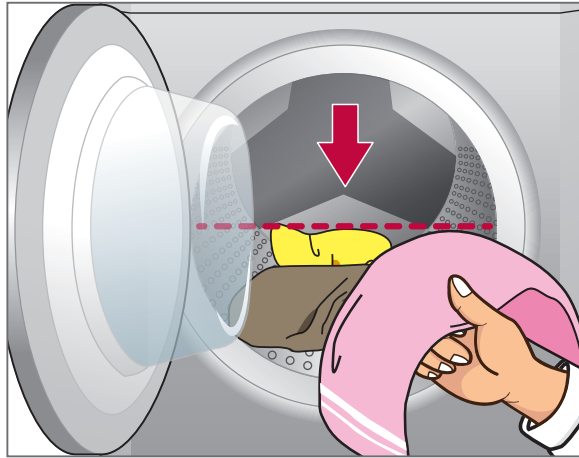
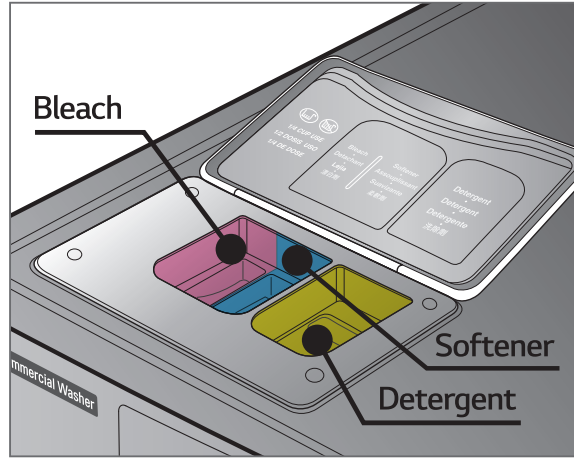


# WASHING INSTRUCTIONS



**1 LOAD** Clothes and close the door.



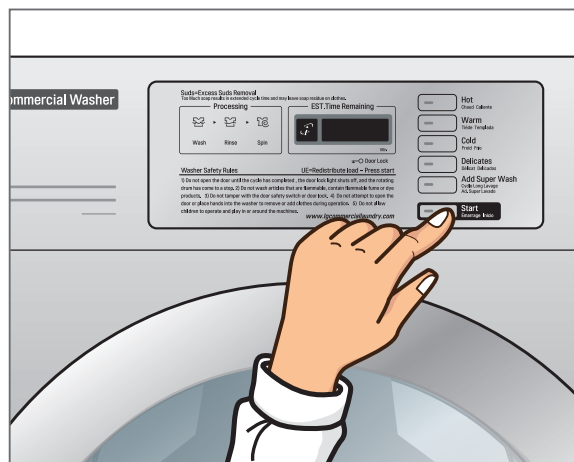
**2 OPEN** Detergent dispenser.



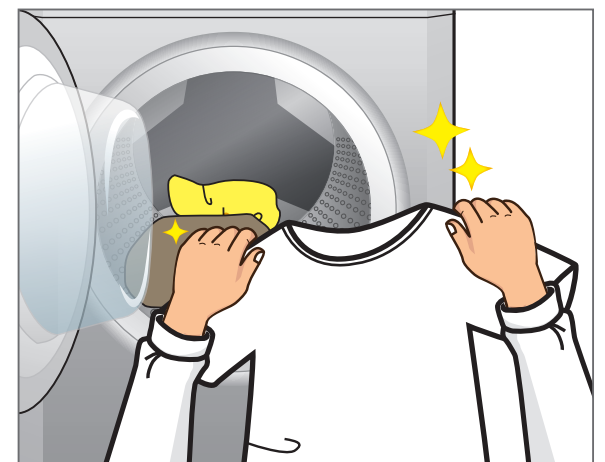
**3 ADD** Detergent less than 1/4 Cup (2 Ounces, 50g). "High Efficiency" Liquid detergent is recommended.



**4 INSERT** Coin or card.



**5 SELECT** Cycle and push the "START" button.



**6 UNLOAD** Clothes after the cycle is finished.

## Helpful Tips



Use detergent less than 1/4 Cup (2 Ounces, 50g). For best results, do not use TOO much soap.



If UE appears on display, please open the door, move laundry around in the drum and press "START" button.



Do not overload the equipment.



If DE appears on display, please close the door properly.



Make sure the equipment is empty before loading.



Check your garments carefully. (NO coins, keys, papers, etc.)



Always follow your garments care labels.



Do not push unnecessary buttons or add detergent after a cycle has started.

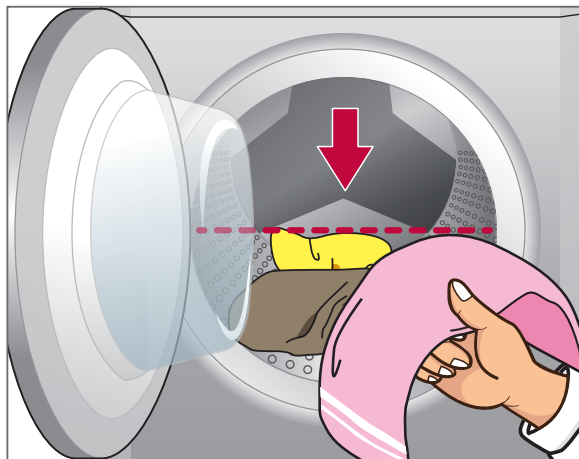


Do not leave heavy objects on the equipment.

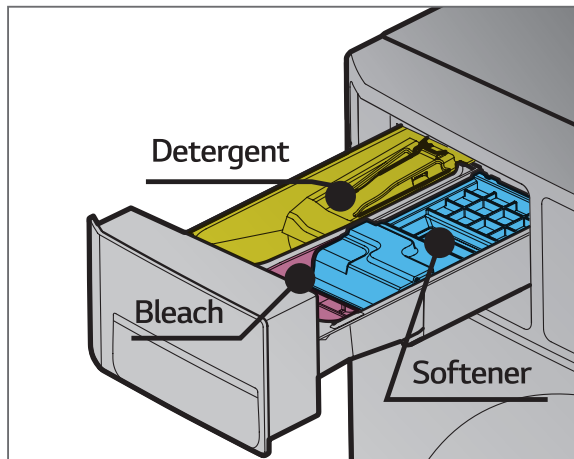


Promptly remove wet clothes from the equipment after wash cycle is complete.

# WASHING INSTRUCTIONS



**1 LOAD** Clothes and close the door.



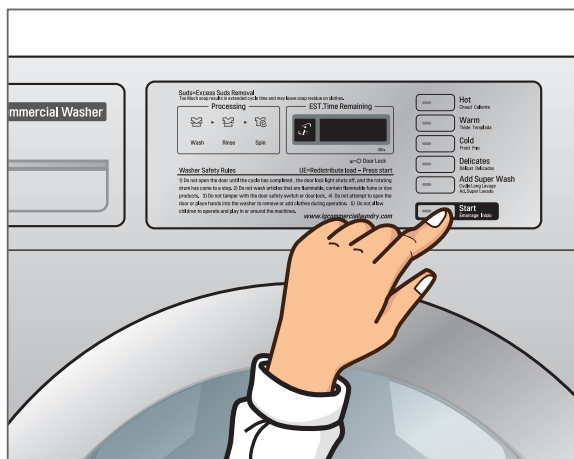
**2 OPEN** Detergent dispenser.



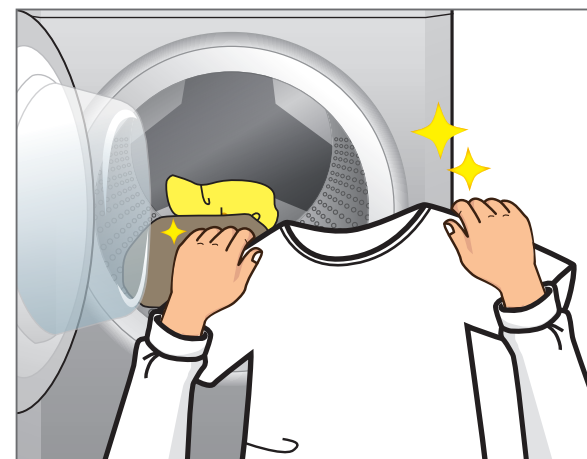
**3 ADD** Detergent less than 1/4 Cup (2 Ounces, 50g). "High Efficiency" Liquid detergent is recommended.



**4 INSERT** Coin or card.



**5 SELECT** Cycle and push the "START" button.



**6 UNLOAD** Clothes after the cycle is finished.

## Helpful Tips



Use detergent less than 1/4 Cup (2 Ounces, 50g). For best results, do not use TOO much soap.



If UE appears on display, please open the door, move laundry around in the drum and press "START" button.



Do not overload the equipment.



If DE appears on display, please close the door properly.



Make sure the equipment is empty before loading.



Check your garments carefully. (NO coins, keys, papers, etc.)



Always follow your garments care labels.



Do not push unnecessary buttons or add detergent after a cycle has started.

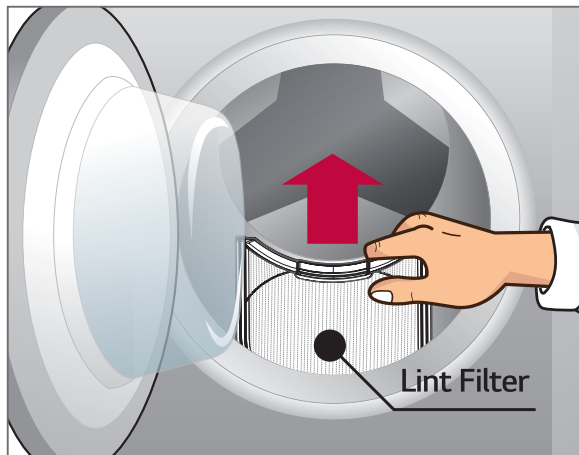


Do not leave heavy objects on the equipment.

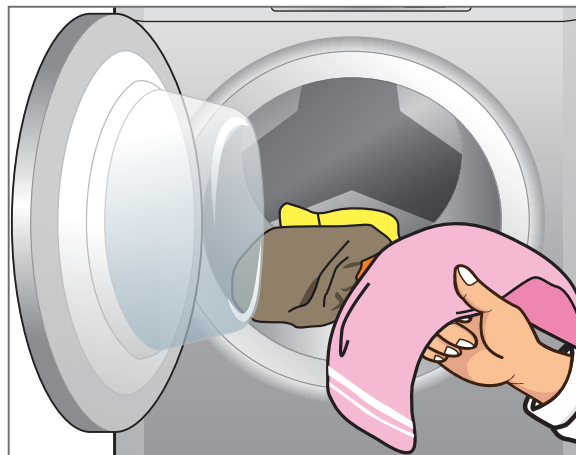


Promptly remove wet clothes from the equipment after wash cycle is complete.

# DRYING INSTRUCTIONS



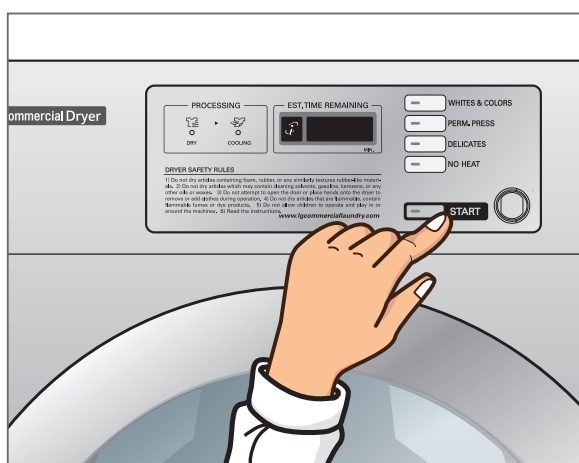
**1 CLEAN** the lint filter before every use.



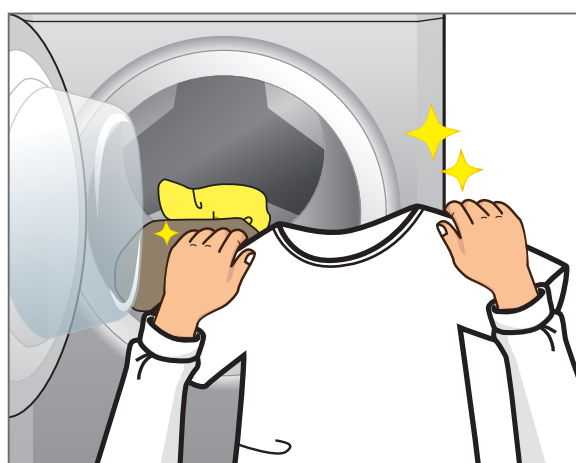
**2 LOAD** Clothes and close the door firmly.



**3 INSERT** Coin or card.



**4 SELECT** Cycle and push the "START" button.



**5 UNLOAD** Clothes after the cycle is finished.

## Helpful Tips



Make sure the equipment is empty before loading.



Check your garments carefully. (NO coins, keys, papers, etc.)



Always follow your garments care labels.



Do not push unnecessary buttons or add detergent after a cycle has started.



Do not leave heavy objects on the equipment.



Shake dust and dirt off your garments BEFORE loading into equipment.



Do not overload the equipment.



Promptly remove wet clothes from the equipment after dry cycle is complete.



Please do not wet equipment when cleaning the floors.