



\* All images are for illustrative purposes only.  
\* Stand accessories differ by models, and need to be purchased separately.

**LG LED** All-in-One LAEC Series

# All-in-One LED Display with webOS



All-in-One  
LED Screen



Built-in Speaker



Dedicated  
Accessories



Easy Installation  
Quick Maintenance



Compatible with  
**LG One:Quick** | Share

Cabinet	LAEC015
Size	345.44 cm (136)
Pixel Pitch	1.56 mm
Brightness	500 nit
Screen Resolution	1,920 × 1,080
Serviceability	Front
Speaker	Built-in
Controller	Embedded

**Life's Good.**



## All-in-One LED Screen with Built-in Speaker

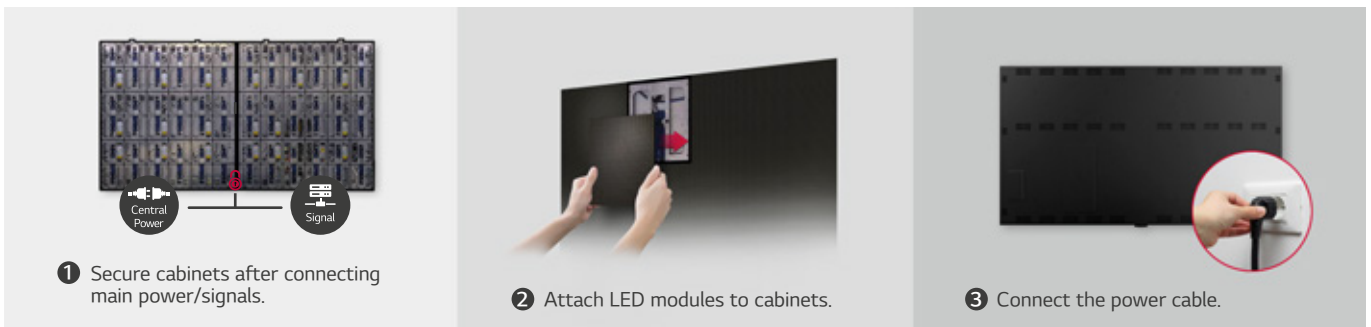
The LAEC series is a 345.44 cm (136) large screen which is offered as an all-in-one package including an embedded controller and built-in speaker. Eliminating the prejudice that LED displays are difficult and complex to install, it doesn't require controller connections or module configuration. After a simple installation process, all you need to do is to turn on the screen with a remote control like home TV.



## High performance with webos

Built-in Quad Core SoC (System on Chip) can execute several tasks at once for providing smooth content playback. Also, LG webOS Smart Platform enhances user convenience with intuitive GUI and provides to SI or/and developers simple app development tools\* such as SDK (Software Development Kit), SCAP, sample applications.

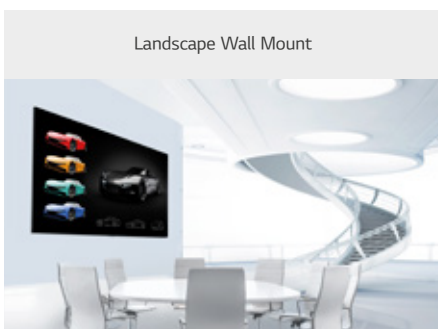
\* The webOS Signage Developer site (<https://webossignage.developer.lge.com>) provides SDK tools and documentation for creating apps on LG Digital Signage. This is only open to partners.



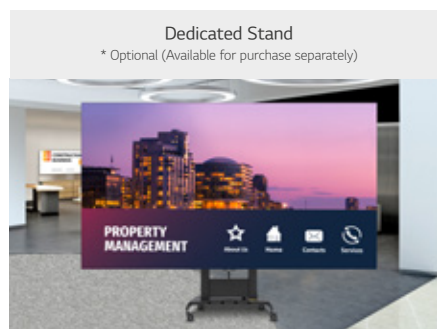
## Easy Installation

The installation process of the All-in-One Smart series is very simple. After securing cabinets (two for LAEC015), attach each LED display module to them. Lastly, plug in the power cable. This simple installation saves time and labor, thereby making users handle the LED screen with ease.

\* Fixing screws or installing wall mount / accessories is needed additionally.

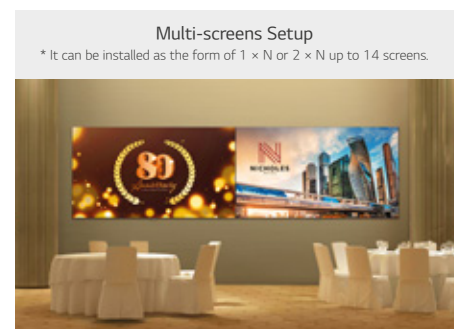


Landscape Wall Mount



Dedicated Stand

\* Optional (Available for purchase separately)



Multi-screens Setup

\* It can be installed as the form of 1 × N or 2 × N up to 14 screens.

## Versatile Installation with Dedicated Accessories

The product is offered with the necessary component including the landscape wall mount and tools for installation. The dedicated stand\* is provided as an option, so that you can easily place it depending on your installation sites. Also, the LAEC series can be installed side by side in the form of 1 × N or 2 × N, up to 14 screens, suitable for its installation site and its purposes.

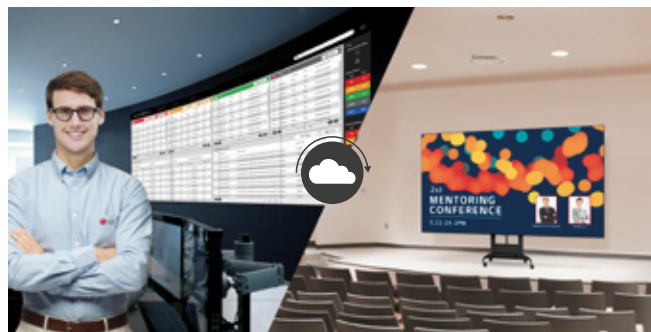
\* Stand accessories differ by models, and need to be purchased separately.





## Quick Maintenance

In case of failure related to the LED module or the system board, it can be serviced from the front. The LED module can be simply detached by the provided magnetic tool and replaced quickly without cabling.



## Real-time LG ConnectedCare

Maintenance is easy and fast with the optional LG ConnectedCare\* service, a cloud service solution provided by LG. It remotely manages the status of displays in client workplaces for fault diagnosis and remote-control services, enabling the stable operation of clients' businesses.

\* The availability of LG ConnectedCare differs by region.

\*\* Stand accessories differ by models, and need to be purchased separately.



## Compatible with AV Control Systems

The LAEC series supports Crestron Connected®\* for high compatibility with professional AV controls to achieve seamless integration and automated control\*\*, boosting business management efficiency.

\* Initial setting from display is required for Crestron Connected® compatibility.

\*\* Network based control



## Wireless Screen Sharing

The LAEC series is compatible with LG One:Quick Share\*, a wireless screen sharing solution. It helps to simply share one's personal PC screen to the display with its button and embedded Wi-Fi\*\*, and it can also adjust the basic setting values (volume, picture mode, auto bright, etc.) of the connected display without a remote control.

\* LG One:Quick Share needs to be purchased separately.

\*\* Users need to set up SoftAP enabled at Network Menu of the Signage.



## Magic Remote for easy of use

With the LG Magic Remote, you can select and run the menu of the signage just like using a mouse and its cursor can be used as a laser pointer. In addition, through the newly added 'FREEZE' button on the remote control, users can temporarily freeze the screen while switching contents on the PC, so that users are able to have uninterrupted meetings without exposing its switching process.

\* LG Magic Remote needs to be purchased separately.

\*\* The FREEZE function is only available when the LAEC is connected to an external input signal.

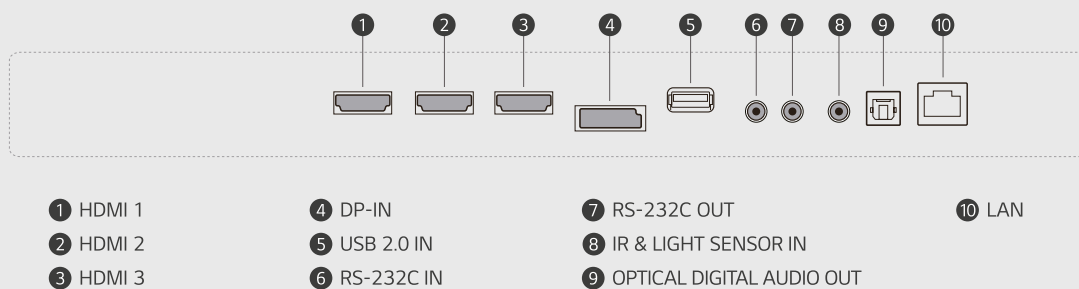
\* All images are for illustrative purposes only.

## SPECIFICATIONS

LAEC015		
Physical Parameters	Pixel Configuration	Single SMD
	Pixel Pitch (mm)	1.56
	Screen Resolution (W × H)	1,920 × 1,080
	Module Dimensions (W × H, mm)	250 × 281.25
	No. of Modules per Screen (W × H)	12 × 6 (Total 72)
	Screen Dimensions (W × H × D, mm)	3,004 × 1,692 × 36.5 (Thickest 70)
	Screen Surface Area (m <sup>2</sup> )	5.06
	Screen Weight (kg)	132
	Physical Pixel Density (pixels/m <sup>2</sup> )	409,600
	Flatness of Cabinet (mm)	±0.2
	Cabinet Material	Die-casting Aluminum
Optical Specifications	Service Access	Front
	Brightness (nit)	500
	Color Temperature (K)	3,200 - 9,300
	Visual Viewing Angle (Horizontal)	160
	Visual Viewing Angle (Vertical)	160
	Brightness Uniformity	98%
	Color Uniformity	±0.015 Cx, Cy
	Contrast Ratio	3,000 : 1
Electrical Specifications	Processing Depth (bit)	16 (HDR10, HDR10 Pro)
	Power Consumption (W/Screen, Max.)	1,700
	Power Consumption (W/Screen, Avg.)	680
	Power Consumption (W/m <sup>2</sup> , Max.)	336
	Power Consumption (BTU/h/Screen, Max.)	5,800
	Power Consumption (BTU/h/Screen, Avg.)	2,321
	Power Consumption (BTU/h/m <sup>2</sup> , Max.)	1,146
	Power Supply (V)	100 to 240
Operation Specifications	Frame Rate (Hz)	50 / 60
	Lifetime (Hours to Half Brightness)	100,000
	Operating Temperature (°C)	0 to +40
	Operating Humidity	10-80% RH
	IP Rating (Front / Rear)	IP30 / IP20
	Speaker	Built-in (9W + 9W)
	Certification	CE, FCC, ETL, CB
	Environment	RoHS, REACH
	Controller	Embedded

\* Specifications are subject to change without notice. Please make sure to check the product manual for details about product usage.

## CONNECTIVITY



Creative Visualization

\*Product Images shown are for representative purpose only. Actual product may vary.

As a continuing policy of product development at LG Electronics, the design and specifications are subject to change. They may vary from model to model. Color/shades may vary due to printing restrictions. E&OE.